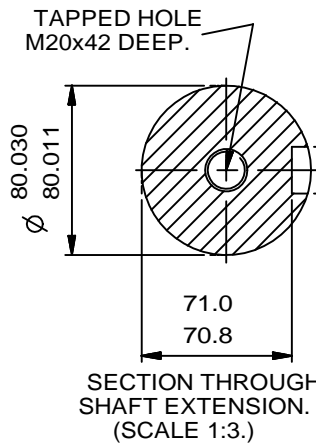


NOTE:  
 TERMINAL BOX CAN BE MOUNTED  
 (LEFT OR RIGHT) BY REFITTING FEET  
 AND LIFTING LUGS 90° IN APPROPRIATE  
 DIRECTIONS. CABLE ENTRY CAN BE  
 SUPPLIED IN ANY ONE OF FOUR  
 POSITIONS AT 90° INTERVALS.



ALL DIMENSIONS IN MILLIMETRES

FIRST ANGLE  
 PROJECTION

**BROOK  
 CROMPTON**

Produced by **Tamel s.p.a.** a company of **ATB**  
Technology in Motion

SHEET SIZE A3	NOTE! 2.5 ENDPLAY WILL BE PROVIDED FOR ENDTHRUST PROTECTION WHEN CUSTOMERS NOTIFY US OF THEIR INTENTION TO USE RIGID COUPLINGS AND DRIVEN MACHINES WITHOUT ENDPLAY.

TITLE OUTLINE DIMENSIONS OF STANDARD FOOT MOUNTED METRIC A.C. MOTOR. TOTALLY ENCLOSED FAN VENTILATED. FRAME SIZE: W-DF280S (4 POLE UP.)
--

	NAME	DATE
DRAWN	JM	09-09-10
CHECKED	KC	09-09-10
SCALE	1:6	

DRG. No.	M9109
DRG. REF.	
REVISION:	DATE